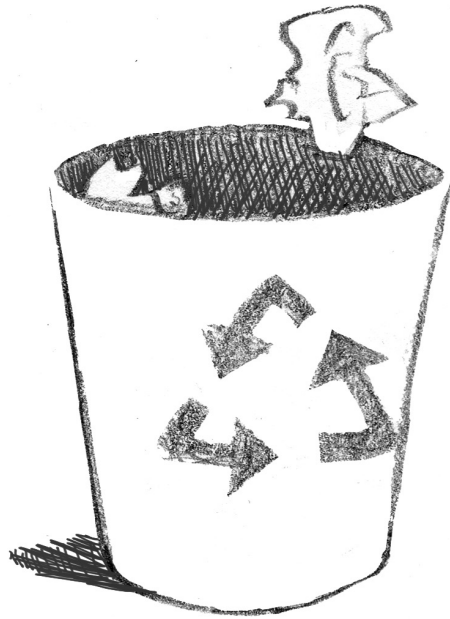


PUBLIC SERVICE DEPARTMENT

Westerville's Public Service Department works to maintain the City's roads, water pipe system and equipment. They also oversee trash and recycling collection. Maintaining and repairing the infrastructure of a city is a challenging job. To help manage this huge workload, the department is divided into four parts, each focusing on a particular area.



The **Environmental Division** looks after the contract with trash and recycling collectors, coordinates street sweeping efforts and takes care of the City's three cemeteries.

The **Fleet Maintenance Division** keeps up and repairs 250 pieces of equipment the City uses, including police and fire vehicles, equipment for leaf collection, salt spreaders and more.

The **Street Maintenance Division** plows snow and controls problems with icy roads in winter. They are in charge of leaf collection, reconstructing brick streets, maintaining curbs and gutters and cleaning the streets.

The **Utilities Division** preserves Westerville's water, sewer and storm water pipe systems.

ACTIVITY!

Unscramble the following words and phrases that describe the work of Westerville's Public Service Department.

ELOTLC ASEVLE _____

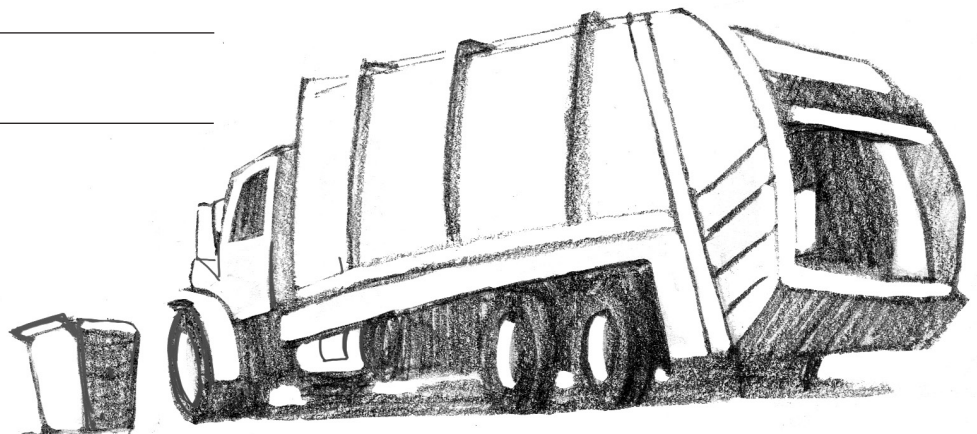
ETRSET PEWSE _____

RDAEPS LATS _____

IXF PIEMTENQU _____

AREIPR ETRESST _____

OLPW NSWO _____



PHRASE HINTS:

FIX EQUIPMENT
PLOW SNOW

STREET SWEEP
COLLECT LEAVES

SPREAD SALT
REPAIR STREETS