



CITY OF WESTERVILLE
GOVERNMENT ACTIVITY BOOK

WHERE IS WESTERVILLE?



The City of Westerville is located northeast of Columbus, about 15 miles from downtown. Most of Westerville is located in Franklin County with a small portion in Delaware County.

Visit the City of Westerville online at:
www.westerville.org

DID YOU KNOW?

- The Ohio state bird is the **CARDINAL**.
- The Ohio state flower is the **SCARLET CARNATION**.
- Ohio became a state on **MARCH 1, 1803**.
- Ohio's nickname is "**THE BUCKEYE STATE**."





ACTIVITY!

Show your city spirit!
Color the Westerville logo
dark green and gold.

WESTERVILLE GOVERNMENT

The City of Westerville was one of the first cities in the United States to adopt a Council-Manager form of government. In 1915, Westerville became the first village in Ohio to use this governing style. Members of City Council are elected by the voters of Westerville and are responsible for making the laws that affect those who live in Westerville. The City Manager is appointed by Council to handle the day-to-day operations of the City and its many departments.

CITY COUNCIL

City Council meets to review and vote on issues or laws that are important for the citizens of Westerville. The Council in Westerville is made up of seven members, including the Mayor, who are elected to four-year terms. To create a new law, City Council must vote on and pass an ordinance. An ordinance is an enforceable municipal (city) law.

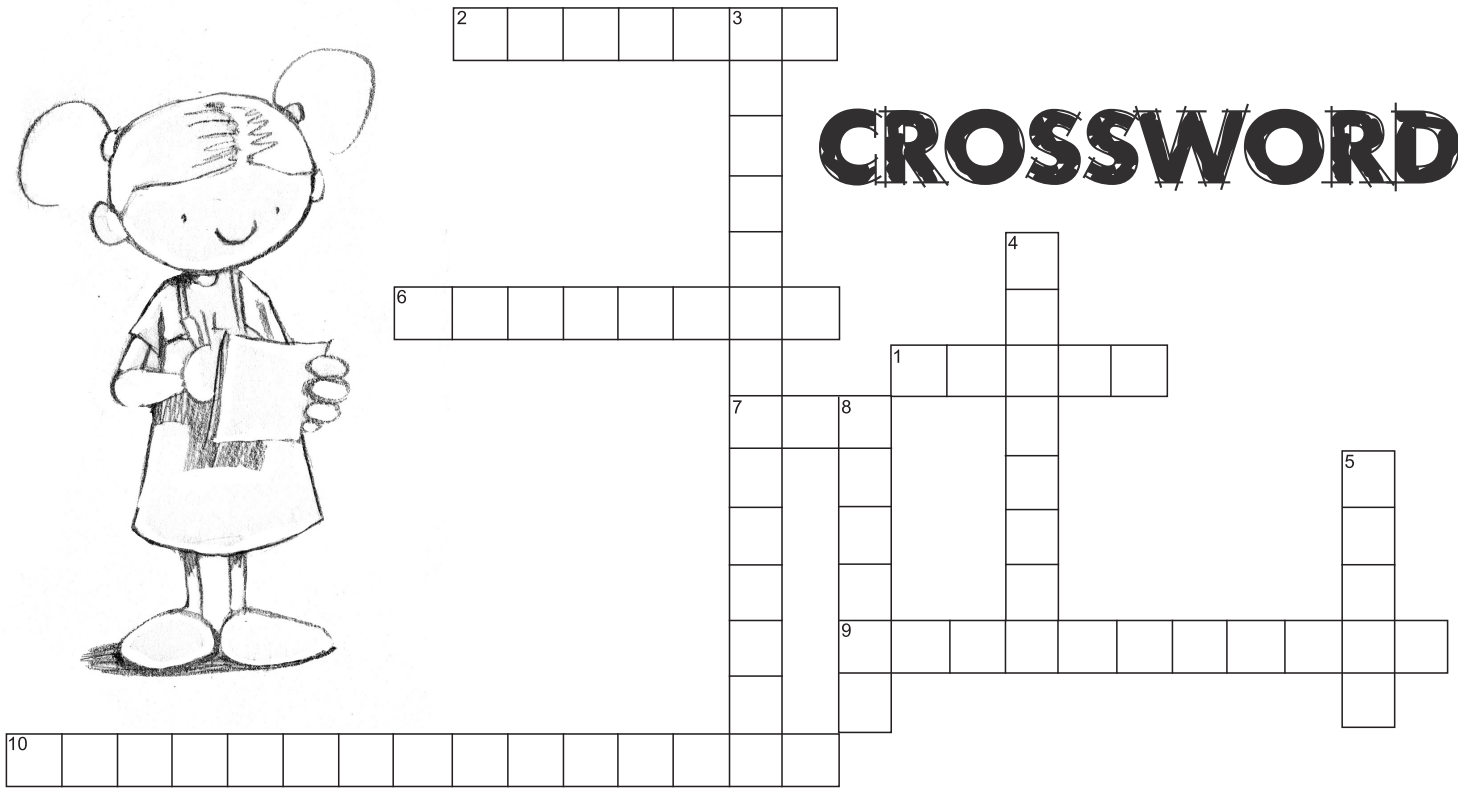
CITY MANAGER

It is the responsibility of the City Manager to direct the day-to-day operations of the City of Westerville and report to City Council. In Westerville, there are 10 department directors who report to the City Manager. In addition to leading and guiding all 10 city departments, the City Manager ensures that Council's policies are put in place. He or she also keeps Council apprised of City business, coordinates the City's budget and guides Westerville's long-term planning.

Demonstrate your knowledge of Westerville city government by filling in this crossword puzzle. Use the words provided to complete the grid.



CROSSWORD



COUNCIL CHAMBERS
COUNCIL MANAGER

CITY MANAGER
WATER

MAP
POLICE
FINANCE

VOTES
ATTORNEY
FRANKLIN

ACROSS

1. The public _____ to elect members of the City Council.
2. Westerville's _____ Department arranges the City's revenues and expenditures.
6. Most of Westerville is located in this county.
7. Planning and Development keeps the _____ of Westerville up-to-date.
9. Appointed by City Council, he/she sees that all policies and programs are implemented.
10. Public City Council meetings are held in this room.

DOWN

3. Westerville has this form of government.
4. The City _____ handles all legal matters for Westerville.
5. The Westerville _____ Division provides you with safe, clean drinking water.
8. The Westerville _____ and Fire Divisions respond to emergencies in Westerville.

CYBER SLEUTH

Whether you want to check out upcoming events around town, sign up for a class at the Community Center or read up on the latest City news, one of the best ways to get to know the City of Westerville is through the City website at:

www.westerville.org

ACTIVITY!

Log-on to the website and test your navigation skills as you uncover the answers to the questions below. With a little detective work, all the answers can be found at www.westerville.org.

List three duties of City Council:

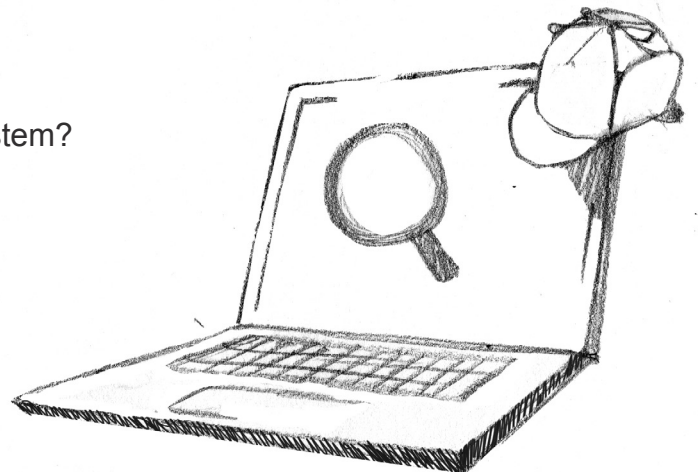
Who is the current City Manager?

Which City department plows the snow so you rarely miss a day of school?

What body of water supplies most of the water to Westerville's water treatment plant?

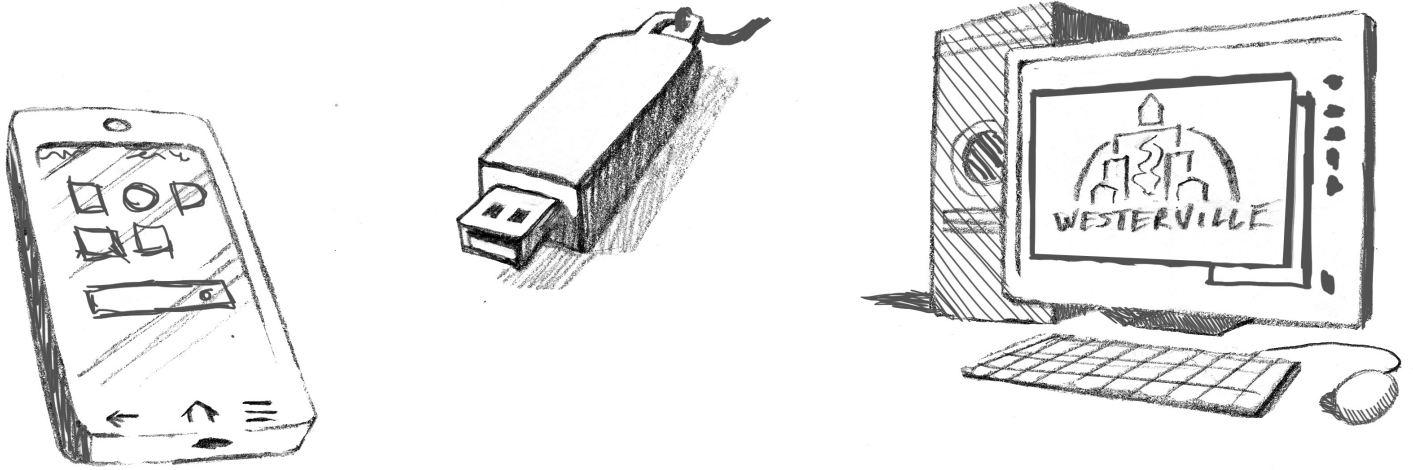
How many acres does Westerville's park system cover?

How many parks make up the Westerville parks system?



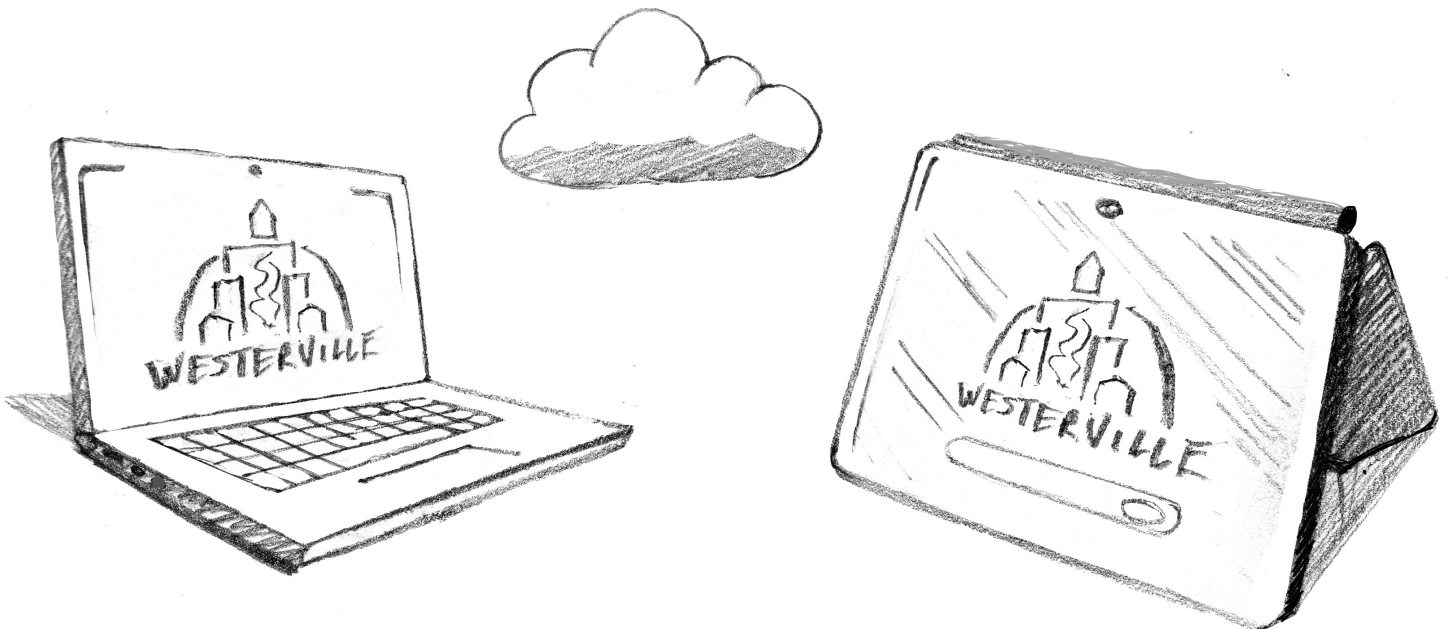
INFORMATION SYSTEMS

The Information Systems (IS) Department manages and maintains the networks the City uses to perform electronic and computer functions. With constant advances in technology, the IS Department keeps computer, phone and mobile technology operational. By using computers, the City of Westerville and its employees can operate more smoothly and efficiently.



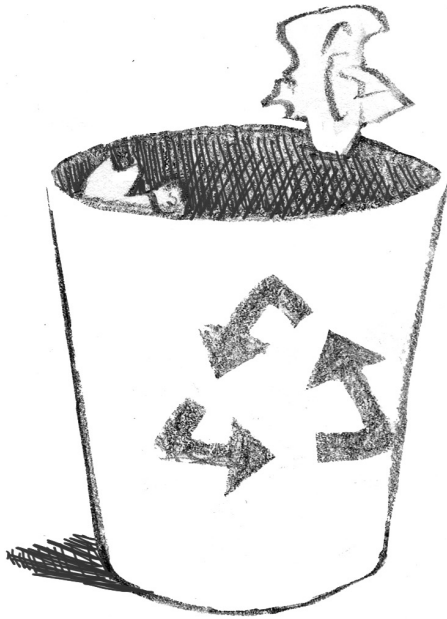
ACTIVITY!

We have just hired you as our new computer expert!
Do your best to label all of the equipment below!



PUBLIC SERVICE DEPARTMENT

Westerville's Public Service Department works to maintain the City's roads, water pipe system and equipment. They also oversee trash and recycling collection. Maintaining and repairing the infrastructure of a city is a challenging job. To help manage this huge workload, the department is divided into four parts, each focusing on a particular area.



The **Environmental Division** looks after the contract with trash and recycling collectors, coordinates street sweeping efforts and takes care of the City's three cemeteries.

The **Fleet Maintenance Division** keeps up and repairs 250 pieces of equipment the City uses, including police and fire vehicles, equipment for leaf collection, salt spreaders and more.

The **Street Maintenance Division** plows snow and controls problems with icy roads in winter. They are in charge of leaf collection, reconstructing brick streets, maintaining curbs and gutters and cleaning the streets.

The **Utilities Division** preserves Westerville's water, sewer and storm water pipe systems.

ACTIVITY!

Unscramble the following words and phrases that describe the work of Westerville's Public Service Department.

ELOTLC ASEVLE _____

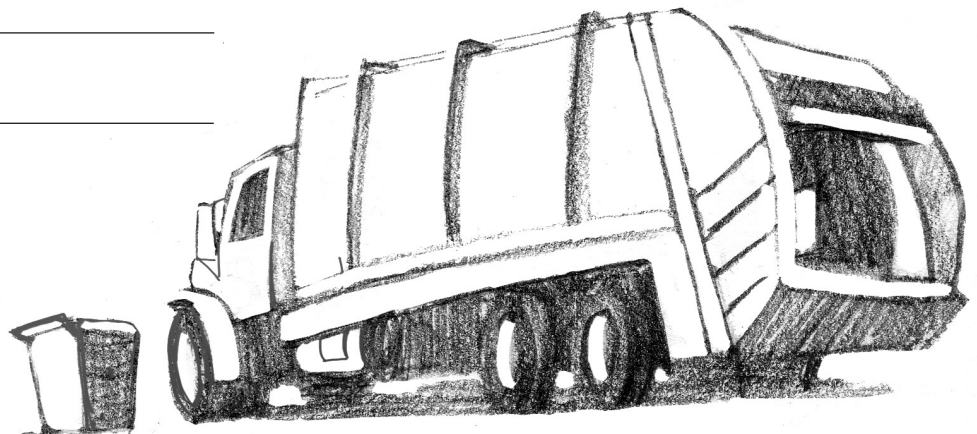
ETRSET PEWSE _____

RDAEPS LATS _____

IXF PIEMTENQU _____

AREIPR ETRESST _____

OLPW NSWO _____



PHRASE HINTS:

FIX EQUIPMENT
PLOW SNOW

STREET SWEEP
COLLECT LEAVES

SPREAD SALT
REPAIR STREETS

PARKS AND RECREATION

Westerville's Parks & Recreation Department enhances the lives and health of residents and visitors by providing facilities for leisure activities and programs. There are more than 40 parks in Westerville! Each provides its own set of activities for you and your friends to enjoy.

ACTIVITY! Draw a line between the picture and the activity it represents.

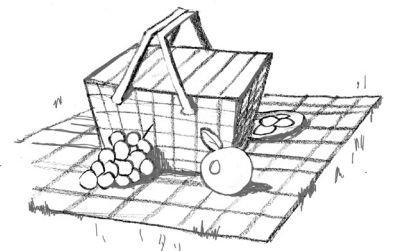
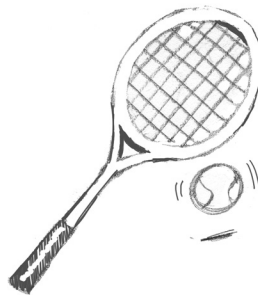
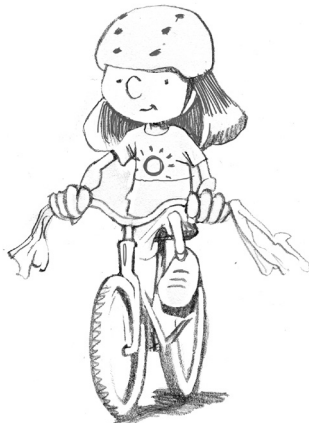
SWIMMING

ROLLER BLADING

JOGGING

TENNIS

BICYCLING



SOCCER

PICNICKING

BASKETBALL

DOG WALKING

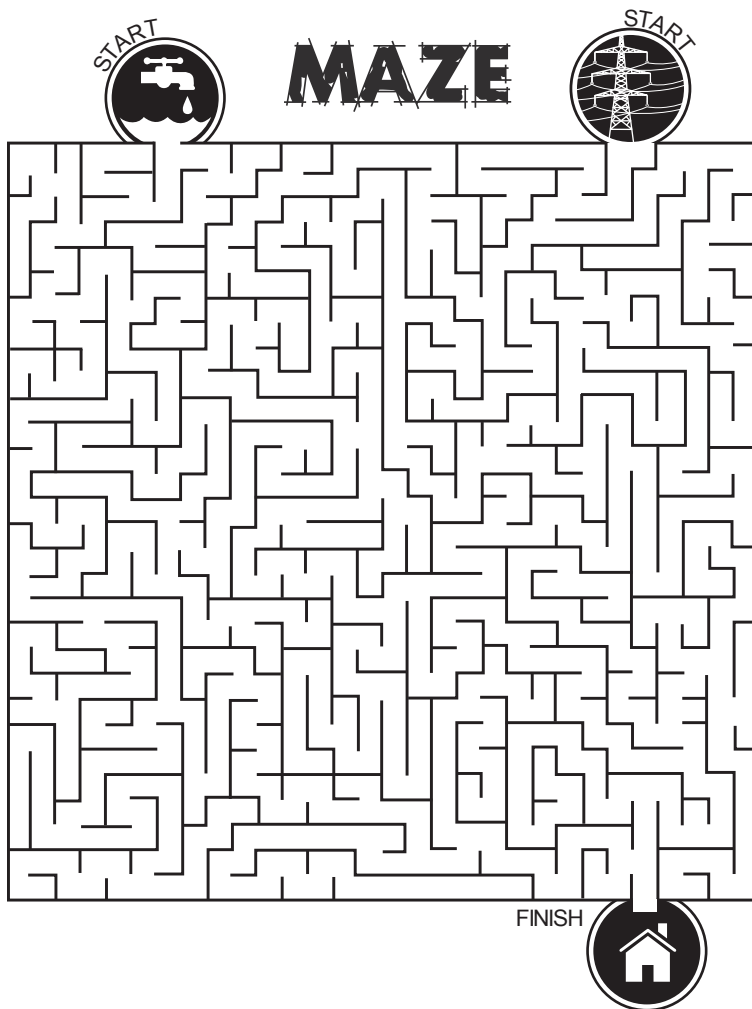
CITY UTILITIES

The Westerville Electric and Water Divisions provide the City with services we often take for granted. These two departments have been providing the City's residents with outstanding service for more than 100 years! The Water Division operates a 7.5 million gallon per day treatment facility to make sure we have the clean water we need each and every day. The Electric Division maintains all the electric meters, electric lines and street lighting.

Stop and think about the amount of water you use each day; like drinking, brushing your teeth, showering and cleaning the dishes. With all this need for water, it is important to conserve it so that we will always have enough.

How can you help conserve water? Some ways may include fixing leaky faucets, not letting the faucet run when brushing your teeth and running the dishwasher only when it is full.

Westerville needs help getting water and electricity to your home. Guide its way to your doorstep.



ACTIVITY!

Above are only a few of the **MANY** ways we conserve water. In the spaces below, write three other ways you can conserve water.

- 1)
- 2)
- 3)

Our need for electricity is just as great. We need and use electricity to keep our homes cool in the summer and warm in the winter, to refrigerate our food, wash our clothes, watch TV and much more. Can you think of ways to save energy by conserving electricity? In the spaces below, write three ways you can reduce the amount of electricity you use.

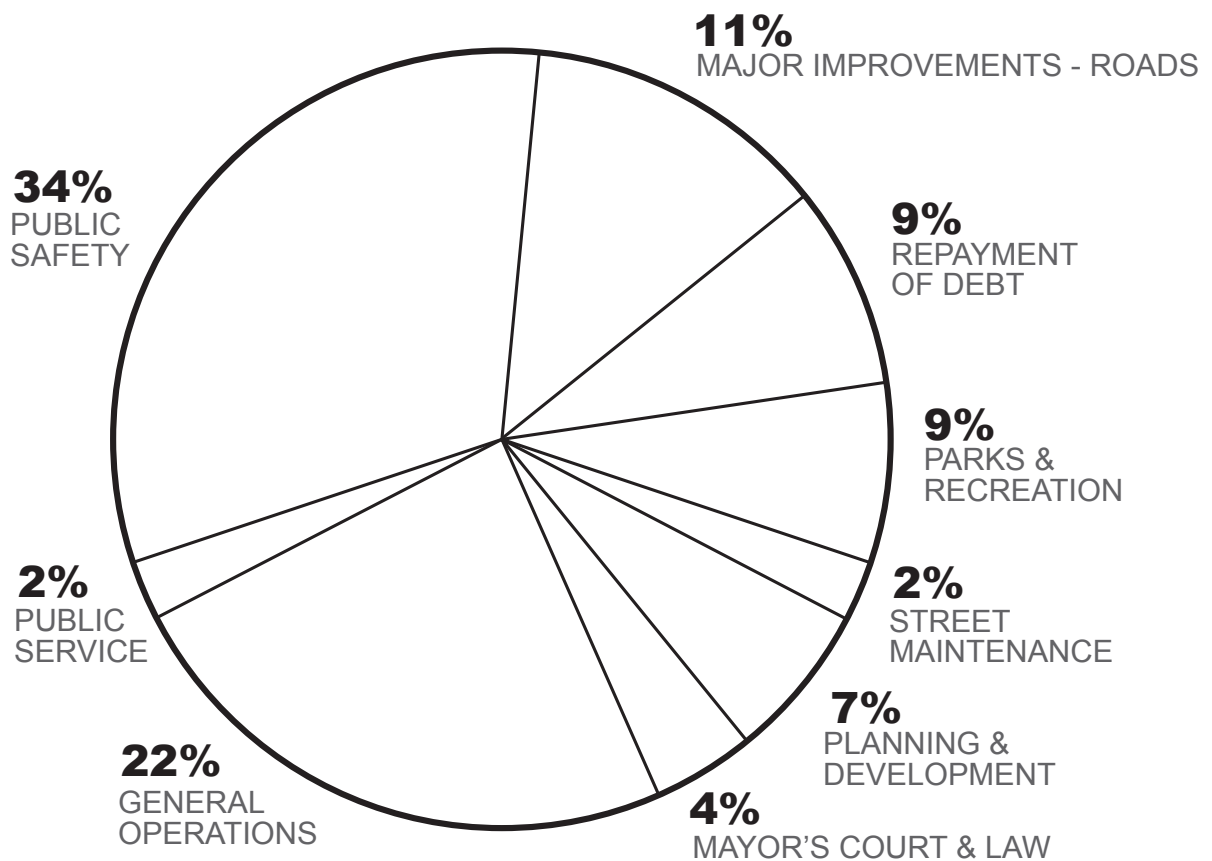
- 1)
- 2)
- 3)

FINANCE DEPARTMENT

In order to provide City services, the City needs money. Westerville's Finance Department is responsible for collecting this revenue. The Finance Department also has a duty to report to the public on how each dollar is spent and how much is collected. The pie chart below shows us how the City plans to spend its money this year, and how it expects to pay for these expenses through its income.

ESTIMATED GENERAL CITY EXPENDITURES

(MONEY THE CITY SPENDS)



ACTIVITY!

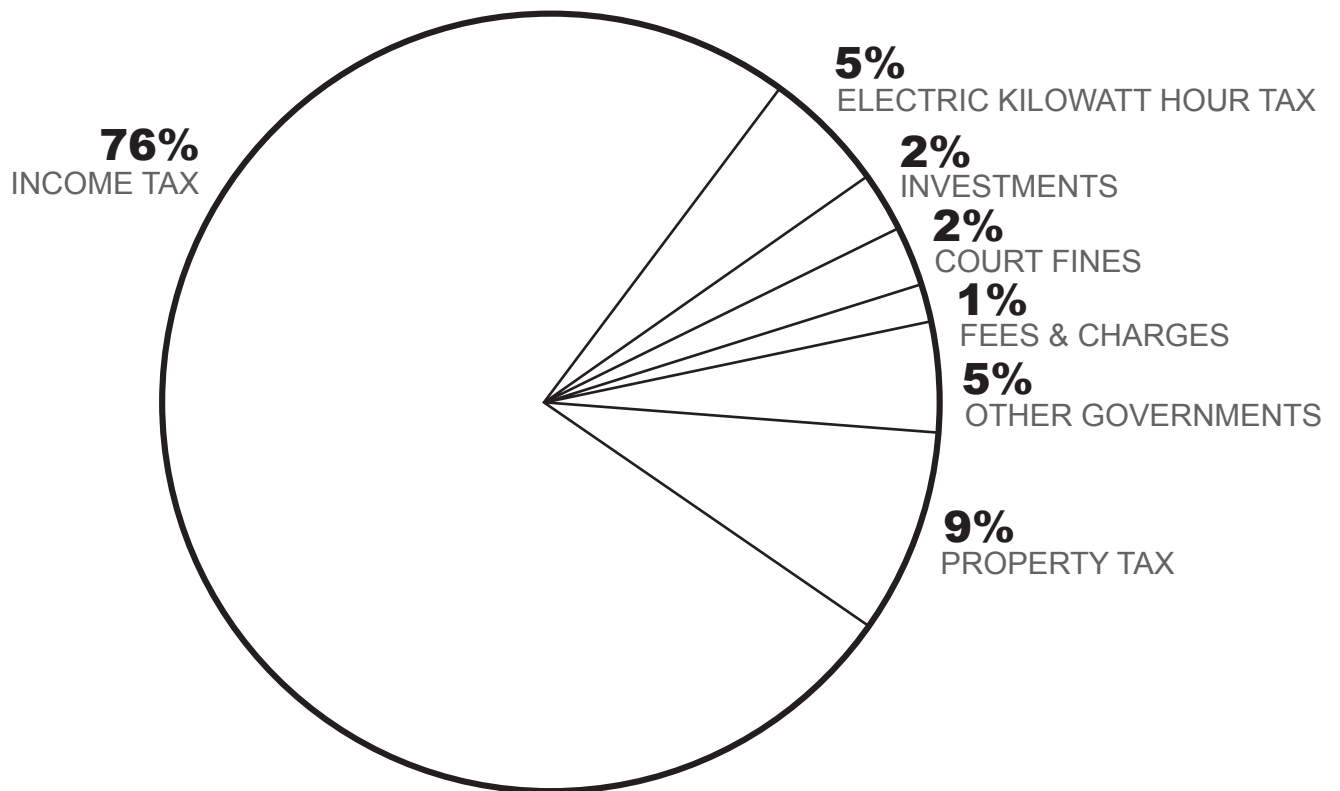
- 1) Find the piece of pie that represents the most the City spends in one area and color it **RED**.
- 2) Find the TWO pieces that represent the least the City spends and color those **PURPLE**.
- 3) For which area does the City of Westerville spend 11% of its money? _____
- 4) Using any color mark the second highest City expenditure with colorful **ZIGZAGS!**

FINANCE DEPARTMENT CONTINUED

Let's continue our look at the work of Westerville's Finance Department by investigating how the City pays for all that we just examined. Take a look at the City's sources of revenue, and follow the instructions at the bottom of the page.

ESTIMATED GENERAL CITY REVENUES

(MONEY THE CITY EARNS)



ACTIVITY!

- 1) From which source will the City receive the most money? Color it **GREEN**.
- 2) Color the third highest source(s) of revenue **YELLOW**.
- 3) The least amount of revenue will come from _____.
- 4) Color the source of revenue that provides 9% of the City's income **BLUE**.

POLICE DIVISION

The Westerville **Division of Police** works around the clock to protect you, your family and your friends. The Police Division has many different responsibilities, such as preventing crimes, investigating criminal and suspicious acts, traffic control, teaching self-defense classes, animal control, digital fingerprinting and hosting community events for officers and citizens to interact and learn more about one another.

Safety is everyone's number one priority. Learn how to better protect yourself and others:

- If there is an emergency, call 9-1-1. Calmly tell the operator what the problem is and stay on the phone until help arrives. Be sure to tell the operator your name and location.
- Never take anything from someone you don't know.
- Be aware of your surroundings. Avoid roaming dark or deserted areas.

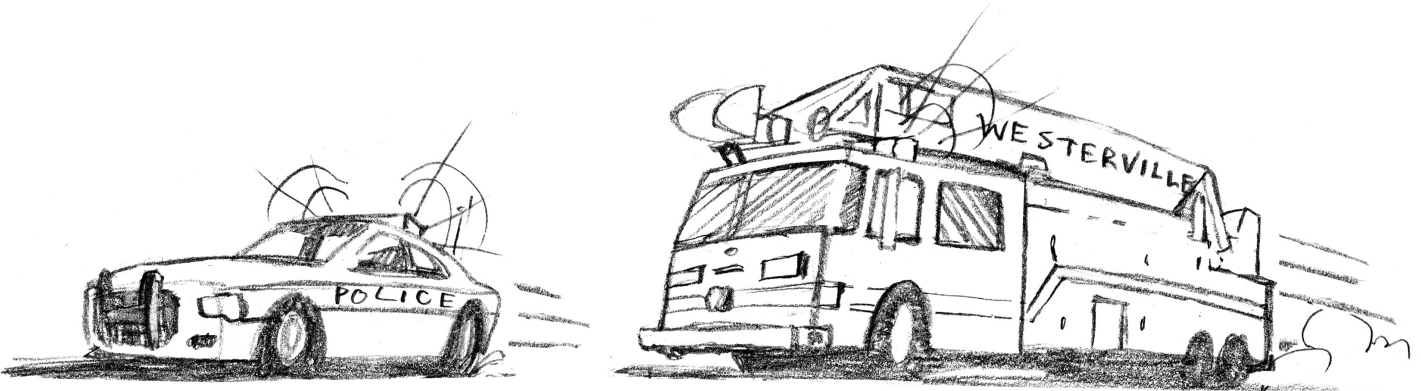
FIRE DIVISION

The Westerville **Fire Division** is responsible for putting out fires, providing emergency medical assistance, and teaching children and adults how to prevent and safely escape fires in their homes and businesses. There are three fire stations positioned throughout the City for fast and effective responses to fire and medical emergencies.

STATION 111 400 WEST MAIN STREET	STATION 112 727 EAST SCHROCK ROAD	STATION 113 355 NORTH SPRING ROAD
--	---	---

During a fire:

- If you hear a smoke alarm, move toward an exit right away.
- Get down and crawl under smoke. Heavy smoke collects near the ceiling.
- Feel the doorknob and door before you open it. If either is hot to the touch, leave the door closed and use your second way out.
- Tell firefighters if there are any pets still in the house. Do not try to get them yourself!
- If your clothes catch on fire, stop, drop and roll! Stop, drop to the ground and cover your face with your hands. Then roll over back and forth until the fire is out.



PUBLIC SAFETY SEEK-N-FIND

Seek-N-Find these words that describe Westerville's Police & Fire Divisions!

DARE
CRIME
BICYCLE PATROL
EMERGENCY
FIREFIGHTER
VOLUNTEERS

FIRE PREVENTION
FIRESTATION
FRIENDLY
HELPFUL
MEDICAL CARE

POLICE DIVISION
POLICE OFFICER
PROTECT
PUBLIC SAFETY
SMOKE DETECTOR

N O G D O C S C L E N F W L N X Z Q C Y
O O A N W H R T P Z I F O Q O P A E R B
Z R I N D Y F F D R B R V W I T M Y I L
E E J T V J Z V E M T O D F S A K V M X
Z P R A N Z A F X A Z S C C I Q M W E N
D V S A W E I W P R M A M A V X F J V E
S T I X C G V E M H G K H G I O I K Q I
Y M H Q H L L E T E V K R V D L X N R I
C H O T G C A T R G G N S L E S C L P E
N W E K Y W M C Y P C M G C C F I I U G
E R P C E P O L I C E O F F I C E R B Y
G B I R U D D F J D D R H E L P F U L T
R B W W O N E E B C E B I I O R H R I F
E J L X E T V T S A F M U F P I S W C A
M G R I H G E P E S B G R J V B A D S Z
E K R B J R M C N C Y G D R N U X I A X
Z F S J S N O I T A T S E R I F A M F M
E F H D K J N P S Q M O Q E R B A T E X
W Q E B I O M C L P Q I R H X I M F T B
V O L U N T E E R S M F S L A N J C Y Q

PLANNING & DEVELOPMENT

The Planning & Development Department has a wide range of responsibilities. The department is in charge of all planning, zoning, building, traffic, road construction and engineering in Westerville.

ACTIVITY!

Let's see how well you know your way around Westerville! Using the City map on the opposite page, follow the directions below to locate and mark some of Westerville's landmarks.

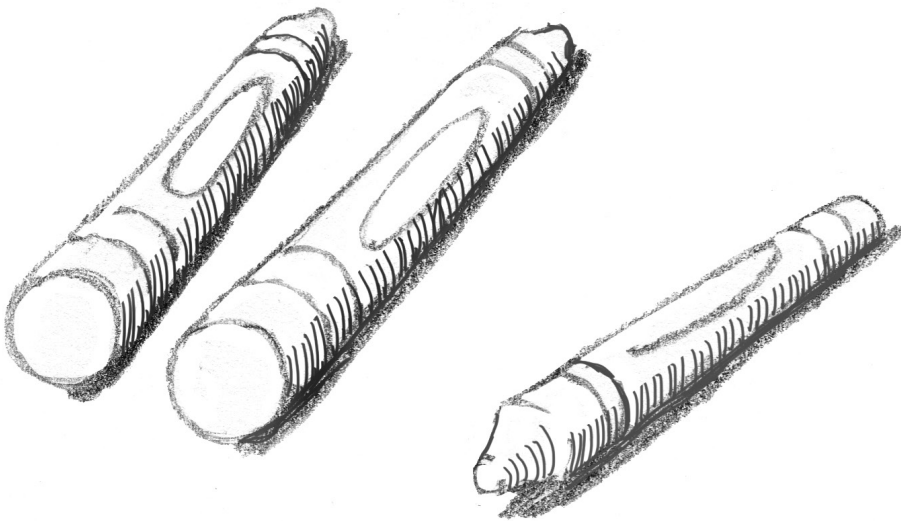
Draw a **PURPLE CIRCLE** around your school.

Trace a **GREEN LINE** along State Street.

Mark a **BLUE X** on City Hall and the Police Station.

Color a **RED TRIANGLE** around your house.

Draw a **YELLOW CIRCLE** around the Westerville Public Library.



Mark the nearest park to your house with an **ORANGE SQUARE**.

Put a **BROWN DOT** on the home of one of your friends.

Draw a **BLACK TRIANGLE** around Otterbein College.

Color the Hoover Reservoir **BLUE**.

Mark the Fire Station nearest to your house with a **RED SQUARE**.

TRACE the roads you take to go to school each morning.

NORTH



FREEMAN ROAD

43

OLD 3-C ROAD

MAXTOWN ROAD

MOSS ROAD

39

COUNTY LINE ROAD

42

18

61

51

S.R. 3

E. HOME ST

4

7

AVENUE

W. MAIN STREET

1

2

9

VINE ST

COLLEGE AVE

PARK ST

WALNUT ST

SUMMIT ST

21

45

15

64

40

HIAWATHA AVE

50

75

5

20

17

SCHROCK RD

STATE STREET

OTTERBEIN

POINTVIEW DR

19

270

HUBER VILLAGE BLVD

HEMPSTEAD ROAD

3

CLEVELAND AVE

DEMPSEY ROAD

PARIS BLVD

13

BUENOS AIRES

GOLDFINCH DR

10

EXECUTIVE PKWY

S.R. 161

DUBLIN GRANVILLE RD

11

FAR-VIEW

WESTERVILLE ROAD

MINERVA LAKE RD



CITY OF WESTERVILLE TRIVIA

Put your knowledge to the test by completing this trivia quiz!

- 1) The Westerville area was settled in _____ by New England settlers.
- 2) Westerville is home to Otterbein University, founded in 1847. In 2007, this university celebrated its _____ anniversary.
- 3) _____ is recognized in a memorial home in Westerville.
He was a musician and composer of folk songs during the Civil War era.
- 4) The city's Municipal Building is located at _____.
- 5) Westerville is located in _____ County and _____ County.
- 6) Name three services funded by our tax dollars.

- 7) The _____ performs the daily administrative work for the city.
- 8) Members of City Council are elected by _____ who live in Westerville.
- 9) Can you name three of the seven members of City Council?

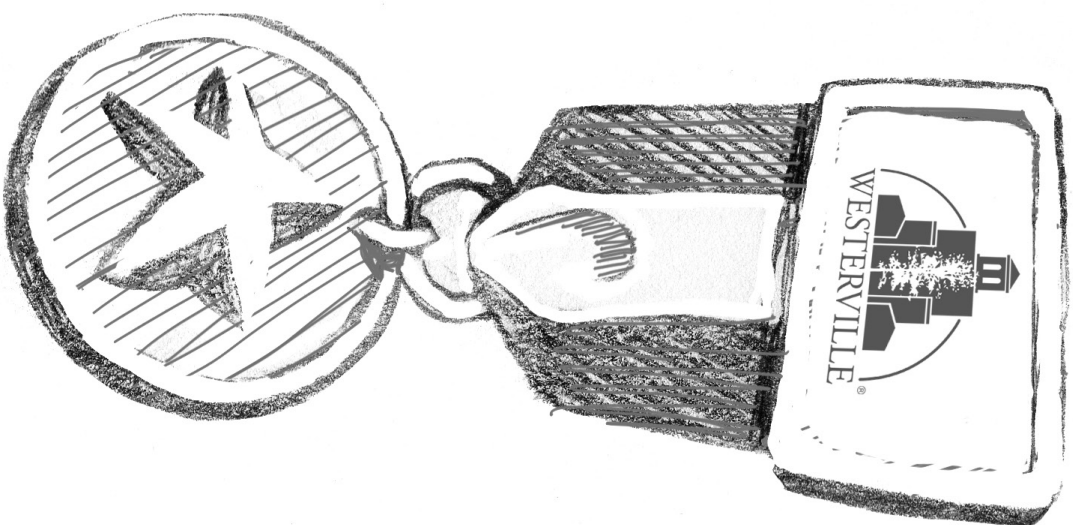
GOOD JOB!

By finishing this quiz, you have successfully earned your diploma!

ANSWERS:

- 1) 1806 2) 160TH 3) BENJAMIN HANBY 4) 21 S. STATE STREET
5) FRANKLIN & DELAWARE 6) VISIT WWW.WESTERVILLE.ORG 7) CITY MANAGER
8) REGISTERED VOTERS 9) VISIT WWW.WESTERVILLE.ORG/COUNCIL

CONGRATULATIONS



NAME _____

YOU HAVE EARNED YOUR DIPLOMA BY PROVIDING YOUR KNOWLEDGE OF THE WESTERVILLE CITY GOVERNMENT!

PRESENTED BY _____

DATE _____

WWW.WESTERVILLE.ORG 614.901.6400

CITY OF WESTERVILLE

21 SOUTH STATE STREET WESTERVILLE, OHIO 43081